

KS SUPPLY CO.

SERVING MIDDLE TN. & SOUTHERN KY. SINCE 1982

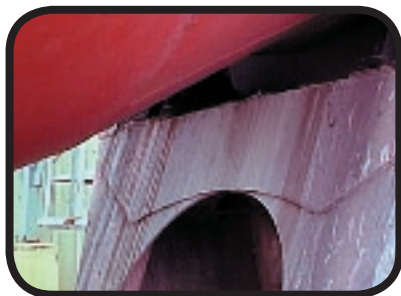


SUPER CRETE RELIEF with WAX

Safe, Non-Corrosive, Heavy Duty Acid Detergent For Removal of Concrete & Lime • Contains WAX To Enhance Gloss

- Non-Corrosive To Skin
- Non-Corrosive To Aluminum
- Non-Corrosive To Steel
- Dissolves Concrete & Lime
- Not Harmful To Personnel
- Safe For Painted Surfaces
- Will Not Harm Glass
- No Fumes
- Works Immediately or
- Works Overnight

If your truck looks like this.....It could look like this
by using Super Crete Relief-W



Apply Super Crete Relief-W.....Wash off in a few minutes or next

DESCRIPTION:

Super Crete Relief-W is an acid detergent designed for removing concrete from a variety of surfaces. **Super Crete Relief-W** contains a detergent to allow it to clean dirt, grease and oil. **Super Crete Relief-W** will remove hardened concrete from concrete ready mix trucks, concrete tankers, scaffolding, forms and other areas where concrete tends to accumulate and harden.

Super Crete Relief-W ships as a non-corrosive product as defined by US Department Of Transportation. **Super Crete Relief-W** is non-corrosive to skin and will not harm ferrous metal, non ferrous metal or painted surfaces. A strong but safe acidic cleaner designed to remove the hardened, tenacious concrete. May also be used as a cab wash for removal of light coatings of lime or concrete. **Super Crete Relief-W** contains a natural vegetable wax to enhance the gloss and appearance of ready mix truck paint. **Super Crete Relief-W** will not etch or darken the aluminum surfaces.

Super Crete Relief-W is designed as a concentrate that can be diluted up to 1:4 with soft water. **Super Crete Relief-W** works in just a few minutes or may be applied and allowed to remain on the concrete over night for removal the next day. **Super Crete Relief-W** will turn concrete into a oat meal like substance that can easily be wash from the surface.

Super Crete Relief-W is truly a new and unique product that affords users the safety and convenience that is needed to maintain concrete handling equipment.

Environmental impact: Once exposed to concrete, the run off solution will be neutralized to around pH 7.0 +/-.